

## AIMS AND SCOPE OF THE SYMPOSIUM

Child sexual abuse (a behavior) on one hand and pedophilia (a preference disorder) on the other hand are two distinct phenomena investigated in forensic and sexological research. While there exists an intuitive link between both, they can occur independently. However, as neurobiological research into both phenomena has been largely based on child sexual abusers results cannot be clearly attributed to child sexual abuse behavior or pedophilic preference, respectively.

The German research network NeMUP-Nord ([www.nemup.org](http://www.nemup.org)), funded by the Federal Ministry of Education and Research and started in 2012, set out to explore the commonalities and differences of biological mechanisms underlying pedophilia on one hand and sexual offending against children on the other hand.

First results of the nearly completed NEMUP study will be presented during this symposium by consortium members. The findings will be discussed within the context of the current state of research on sexual behavior, neurobiology of sexual arousal and forensic sex research represented by three international experts.

## CONTACT

### Scientific Organisation

Klaus M Beier, MD, PhD  
Institute of Sexology and Sexual Medicine  
Luisenstraße 57  
D-10117 Berlin  
[klaus.beier@charite.de](mailto:klaus.beier@charite.de)

Henrik Walter, MD, PhD  
Division of Mind and Brain Research at the  
Department of Psychiatry and Psychotherapy  
Charitéplatz 1  
D-10117 Berlin  
[henrik.walter@charite.de](mailto:henrik.walter@charite.de)

### Press contact

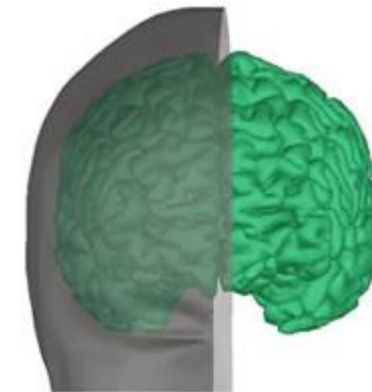
Andreas Peter  
Institute of Sexology and Sexual Medicine  
Charité – Universitätsmedizin Berlin  
Luisenstraße 57  
D-10117 Berlin  
[andreas.peter@charite.de](mailto:andreas.peter@charite.de)

Funded by



### The NeMUP Research Collaboration

K M Beier, H Walter, Berlin  
T Krueger, Hanover  
M Walter, Magdeburg  
J Ponseti, Kiel  
B Schiffer, Duisburg-Essen



## INTERNATIONAL SYMPOSIUM ON NEURAL MECHANISMS UNDERLYING PEDOPHILIA AND CHILD SEXUAL ABUSE

Berlin, 28<sup>th</sup> May 2015  
Humboldt Graduate School,  
Luisenstr. 56, 10117 Berlin

## SCIENTIFIC PROGRAM

### 11:00 – 13:30 Neurobiology of Sexual Behavior and Pedophilia (Chair: Klaus M Beier, Berlin)

11:00 Erick Janssen  
(Bloomington/ Leuven):  
The Role of Sexual Excitation and Inhibition in Sexual Behavior and Decision Making

11:40 James Cantor (Toronto):  
Assessment of Pedophilia: Past, Present, Future

12:20 Serge Stoléru (Paris):  
Brain Functional Imaging Studies of Sexual Arousal and Sexual Preference in Humans

13:00 Henrik Walter (Berlin):  
Neurobiological Research on Pedophilia: a Neuroethical Perspective

### 13:30 – 14:30 Break

### 14:30 – 17:00 Results from NeMUP-Research (Chairs: Martin Walter, Jorge Ponseti)

14:30 Pedophilia and Child Sexual Abuse: Clinical Characteristic and Abuse Associated Factors in the NeMUP-Study (T Krüger et al.)

15:00 Differential Profiles of Executive Dysfunction in Pedophilic and Non-pedophilic Child Sexual Offenders (G Tenbergen et al.)

15:30 Brain Structural Alterations Associated with Pedophilia and Child Sexual Offending (T Amelung et al.)

16:00 Brain Functional Correlates of Response Inhibition Associated with Child Sexual Abuse (C Kärgel et al.)

16:30 Validity of a Functional MRI Approach to the Classification of Pedophilia (J Ponseti et al.)

17:00 Subgroup-Specific Differences in Baseline Brain Connectivity (M Walter et al.)

## INTERNATIONAL SPEAKERS

### James Cantor

Has been using MRI and other techniques to study the role of the brain in pedophilia and other atypical sexual interests for over ten years. Associate Professor of Psychiatry at the Univ. of Toronto. Head of Research “Law and Mental Health Program”, CAMH Toronto. Serves as EiC of *Sexual Abuse: A Journal of Research and Treatment*. Other research interests: causes and expression of hypersexuality, paraphilias, sexual orientation, and gender identity.

### Erick Janssen

Professor at the Institute for Family and Sexuality Studies at the Univ. of Leuven. Senior Research Fellow at the Kinsey Institute at Indiana Univ. For almost two decades Senior Scientist and Director of Education and Research Training at the Kinsey Institute. Other research interests: psychophysiology of sexual desire and arousal, individual differences in sexual excitation and inhibition, sexual dysfunction, sexual aggression, sexual compulsivity, risky sexual behavior, and sexuality and close relationships.

### Serge Stoléru

Has been studying for the last 20 years the cerebral basis of sexual desire and arousal through the use of functional neuroimaging techniques. His focus has shifted from healthy subjects to patients with sexual disorders, including hypoactive sexual desire disorder, hypogonadism and pedophilic disorder. Other research interests: phenomenological, neural, neuroendocrine and therapeutic approach to these disorders.